

Past Global Changes (PAGES)

<http://www.pages-igbp.org/>

Mountain Research Initiative Europe (MRI)

<http://mri.scnatweb.ch/networks/mri-europe/>

Department of Geography, University of Suceava, ROMANIA

http://atlas.usv.ro/www/geografie/prima_pagina_eng.php

<http://usv.ro/>

and

Applied Geography Association GEOCONCEPT

<http://fig.usv.ro/www/geoconcept/>



Organizers are pleased to invite you to the 1st international workshop

**CLIMATE CHANGE IN THE
CARPATHIAN- BALKAN REGION
DURING THE LATE PLEISTOCENE
AND HOLOCENE**

in SUCEAVA, Romania in 9-12 June 2011

<http://atlas.usv.ro/www/climatechange/>

2nd ANNOUNCEMENT

Dear colleagues,

On behalf of the workshop organizing committee, we would like to invite you to present your contribution and paper in the 1st Workshop on Regional Climate Dynamics “**Climate Change in the Carpathian-Balkan Region During the Late Pleistocene and Holocene**”, which will be held in the city of Suceava, Bucovina region, ROMANIA, between June 9-12, 2011.

1. Preliminary programme

Wednesday – June 8th 2011

Block 4 (Căminul nr. 4), Scurtă St., Campus USV, Suceava

18:00 - 22:00 Venue and Opening of registration desk (will be open during the whole conference)

Thursday – June 9th 2011

Building E (Corp E: First Floor). Aula

8:00 - 9:00 Registration desk

9:00 Opening Ceremony

10:00 - 13:30 Keynote lectures

13:30 - 15:00 Lunch (Restaurant USV)

15:00 - 19:00 Oral presentations (part I)

19:15 - Dinner (Restaurant USV)

Friday – June 10th 2011

Building E (Corp E). Aula

9:00 - 13:30 Oral presentations (part II)

13:30 - 15:00 Lunch (Restaurant USV)

15:00 - 19:00 Oral presentations (part III)

20:00 - Festive Dinner (Conacul Domnesc Restaurant)

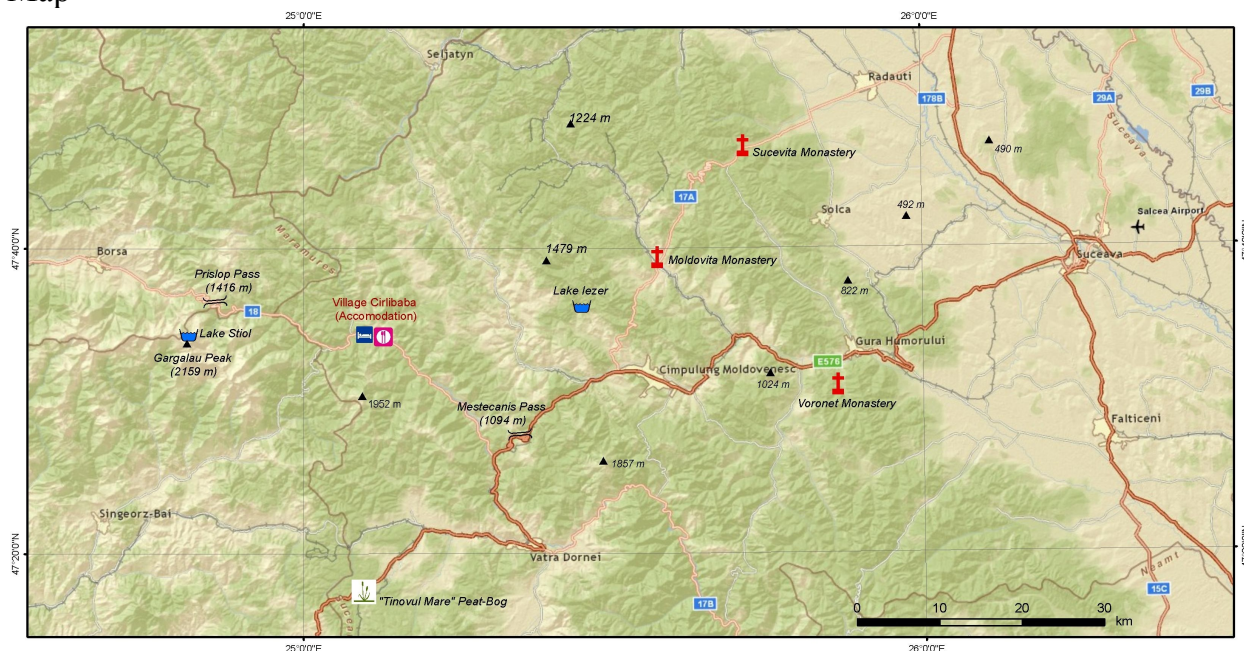
Saturday and Sunday (11 - 12 June 2011): Field trip

Field excursions to the formerly glaciated alpine ranges of the Northern Romanian Carpathians, as well as to several large peat-bog accumulations and wetland ecosystems are also planned.

Suceava – Sucevița Monastery – Moldovița Monastery – Iezer Feredeu lake – Cîmpulung Moldovenesc – Mestecăniș Pass – Bistrița Aurie valley – Cârlibaba (lunch) – Prislop Pass – Bistricioara glacial cirque (Gărgălău Peak, Rodna Masiff) – Cîrlibaba (dinner and accommodation) – Poiana Stampei – Vatra Dornei – Voroneț Monastery – Suceava.

Price: 50 Euro or 200 lei (RON)

Map



2. Oral Presentations

The allocated time for oral presentations is 20 minutes in total. This includes the time necessary for the presenter to be introduced, the presentation and question time.

Therefore, the presentation itself should be no longer than 15 minutes. The presenters will have access to a PC-compatible (no Mac) laptop with an LCD projector. Please, bring your PowerPoint presentation to the meeting on a flash drive or CD in order to load it to the in-room laptops. You will not be able to use your own laptop for your presentation. You can load your presentation to one of the conference laptops before the first session, or during the breaks preceding your presentation.

There will be a support staff member in the conference room to help you.

3. Poster Presentations

Each poster will be allocated space of 1.0 x 1.2 m. The preferred poster format is with the height larger than the width. It is advisable to hang the posters sometime before

the poster session on the day of the respective session, if possible. The posters will have to be removed by the end of the day of each session. The presenters are kindly requested to be standing next to their posters in the Poster Room during the breaks (see the Programme for the exact timing).

4. Conference venue

Locations:

8 June at *Căminul studențesc C4, Campus Universitar USV, Suceava (Block C4, USV University Campus, Suceava)*

9 and 10 June at *Corp E (Block E), 1st Floor, Conference Hall*

http://www.usv.ro/index.php/ro/12/V_Tur%20virtual/118/0/149

5. Conference hall

Universitatea Suceava, Corp E (University of Suceava, Building E) (see map for directions).

6. Access

The Conference will be held in Corp E (Building E), 1st floor, University of Suceava, Suceava, Romania (see maps for directions).

By air:

The nearest airport (Stefan cel Mare/Suceava Airport) is located 20 km (25 minutes by car/taxi) from the University of Suceava. There are direct flights from/to Bucharest, Sibiu and Timisoara (Romania).

<http://www.aeroportsuceava.ro/>

By train:

Suceava is connected with other cities in Romania and with the neighboring country, Ukraine.

Suceava - Iasi (2 h)

Suceava - Bacău (2 h)

Suceava - Bucharest (7 h)

Suceava - Timisoara (12 h)

By bus:

There are direct buses from Suceava to all the large towns in Romania (Iasi, Bacău, Bucuresti, Constanta, Brasov, Cluj-Napoca, Timisoara. etc.).

By car:

If travelling from south (e. g. Bucharest) use National Express road E85.

If travelling from west (e.g. Budapest, Vienna, Cluj-Napoca) use DN 1/E 60 until Cluj Napoca and then DN 17/E58 to Suceava:

http://www.e-transport.ro/Galerie_foto-HARTI_RUTIERE-245-52-2469.html#

Car parking is available either in front of Block 4 (Căminul C4) or within the University campus allowed free of charge (see maps). On the first day of registration a workshop minibus and car will be provided from the Suceava railway station and airport to the conference venue (free of charge).

By taxi:

Taxi service is provided by local companies from Suceava railway station (6 km - approx. 10 lei/2.5 Euro) and airport (20 km - approx. 40 lei/10 Euro).

7. Accommodation

All the participants will be accommodated in Block 4 (Caminul C4) in double rooms - 5 minutes' walk to the conference hall (see map for directions).

If you arrive at the accommodation venue (Block 4) without the assistance of a Workshop staff member, there will be a list at the porter desk containing the name of all the participants. Please let them know your name and that you are a Workshop participant.

If you come by car you can park your car either in front of Block 4 (if there are free spots) or within the university campus (see the maps bellow), where there is sufficient parking space available.

Important! We will provide accommodation during the conference period for the nights of 8/9, 9/10 and 10/11 June 2011, respectively. Should any participant require accommodation for the night of Sunday (12/13 June 2011) please let us know in advance in order to reserve accommodation for you in the same place. *Please note that in such a case there will be a charge.*

8. Meals

All the meals, with the exception of the festive dinner, will be served for all participants in the USV Restaurant, 3' walk from the accommodation, as follows:

1. Breakfast (9, 10 and 11 June): 8.00
2. Lunch (9 and 10 June): 13.30
3. Dinner (9 June): 19.15

The Festive Dinner will be served on Friday at 20:00 at “Conacul Domnesc” Restaurant.

<http://www.conaculdomnesc.ro/>

Vegetarian menus will be available, as well, for participants who have required it in advance.

** If you have any special requirements regarding accommodation and meals, please contact us.*

9. Cancellation policy

Participants who are unable to attend the conference at the last minute are advised to encourage another member of their staff to attend instead.

10. Further information

All the venue rooms shall be equipped with a computer and a computer-connected data projector.

English will be the official language of the Workshop. Simultaneous translation services will not be available.

A Book of Abstracts from the Workshop shall be published. All abstracts were peer-reviewed by the scientific board of the Workshop.

11. Publication

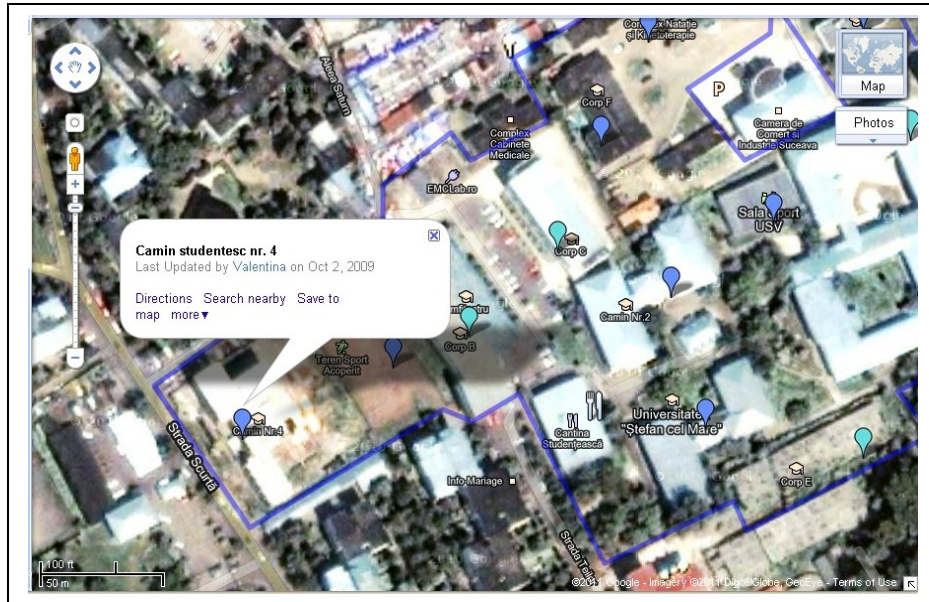
Based on the presentations at the Workshop, we intend to publish an edited volume in cooperation with the journal *Quaternary International* if a sufficient number of high-quality contributions are received. In this respect all necessary details have already been arranged with the Editor of *Quaternary International*.

All manuscripts will be reviewed under the procedure of this journal.

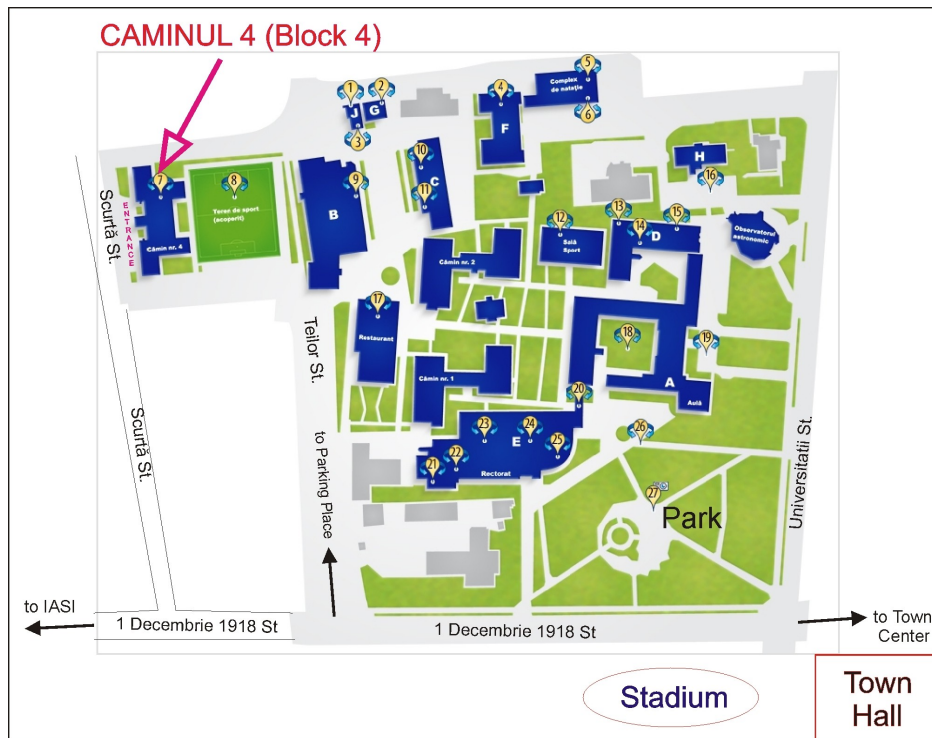
12. Locations and directions:

Căminul C4 (Block 4)

<http://maps.google.com/maps/ms?ie=UTF8&hl=en&msa=0&msid=102950531121386798267.000474f2750430445f69f&z=18>

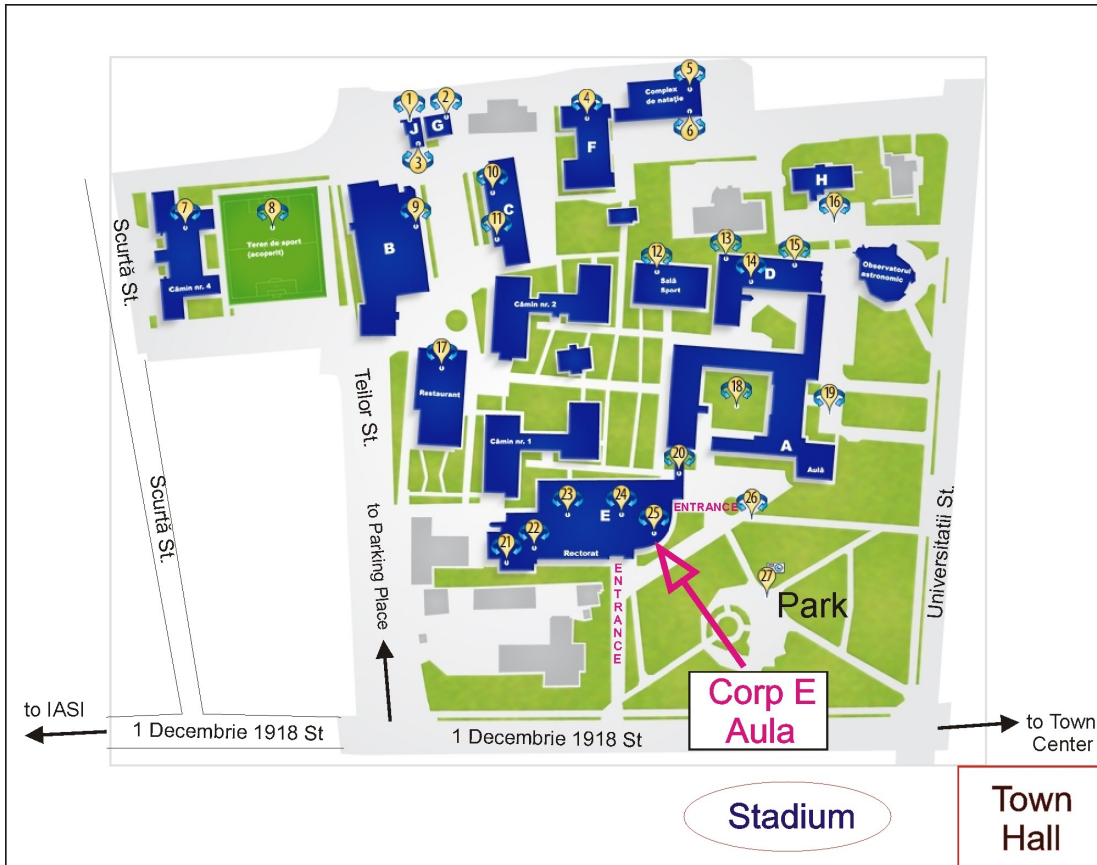
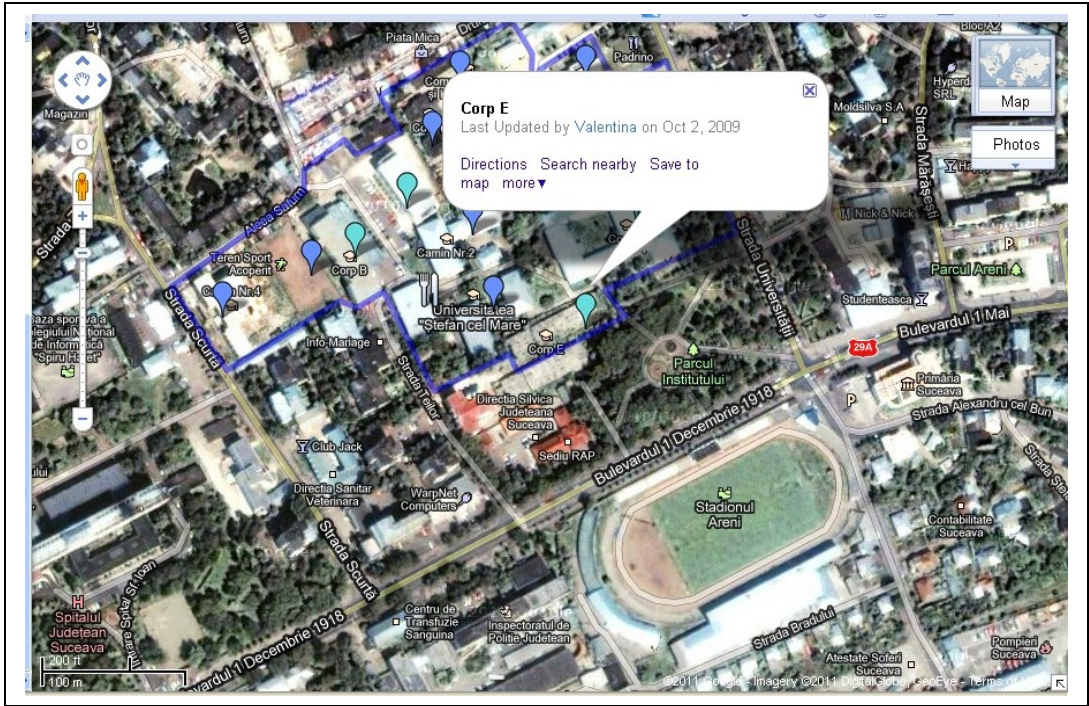


http://www.usv.ro/index.php/ro/12/V_Tur%20virtual/118/0/149

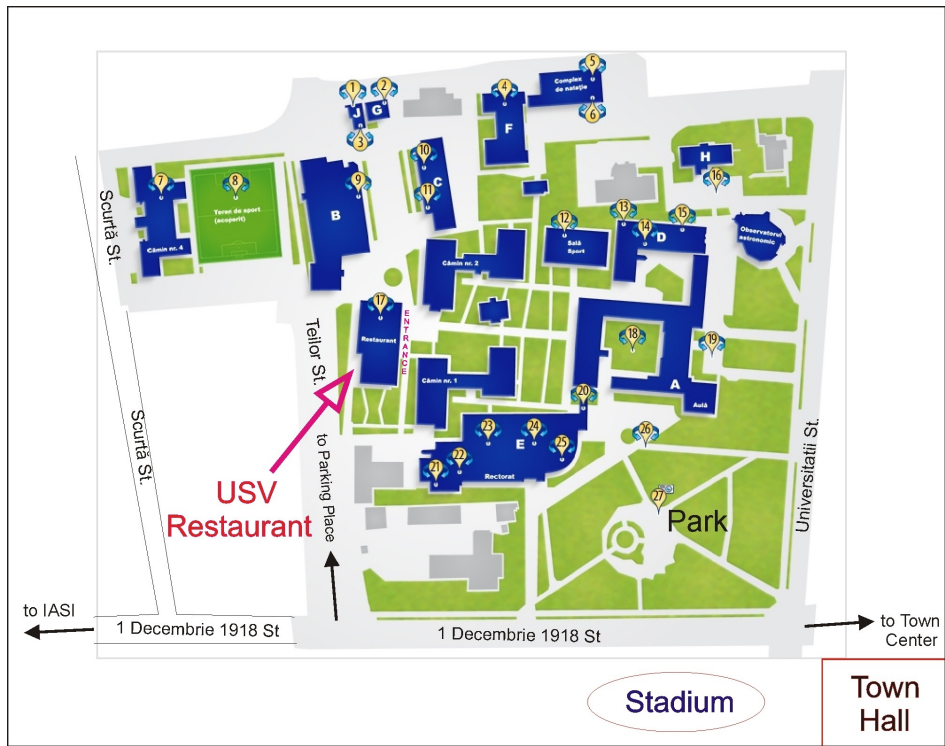


Building E/ Conference Hall (Corp E)

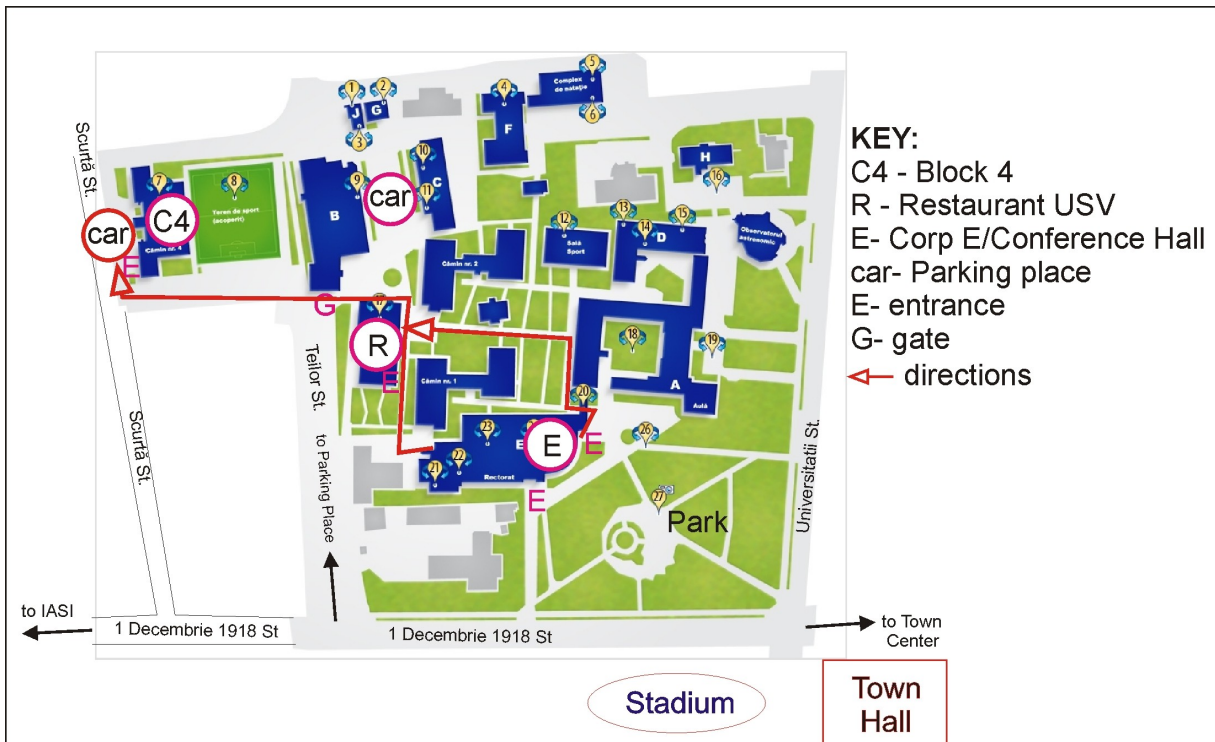
http://www.usv.ro/index.php/ro/12/V_Tur%20virtual/118/0/149



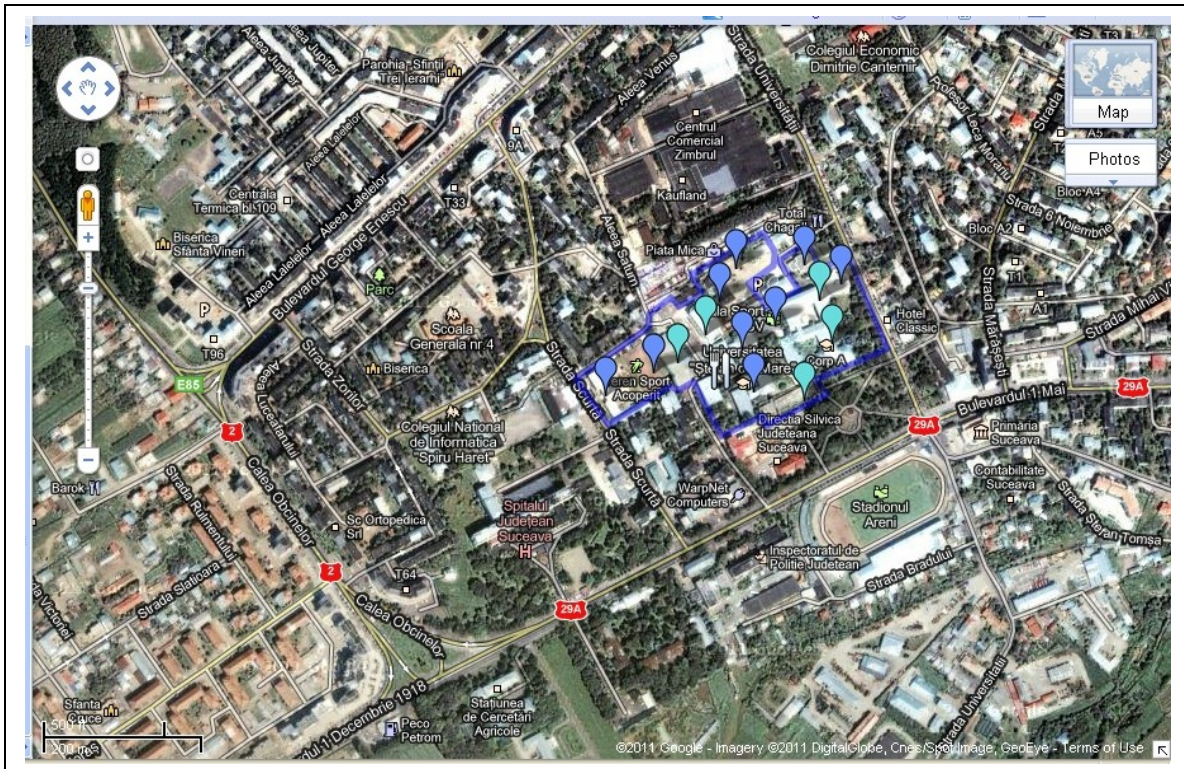
Restaurant USV



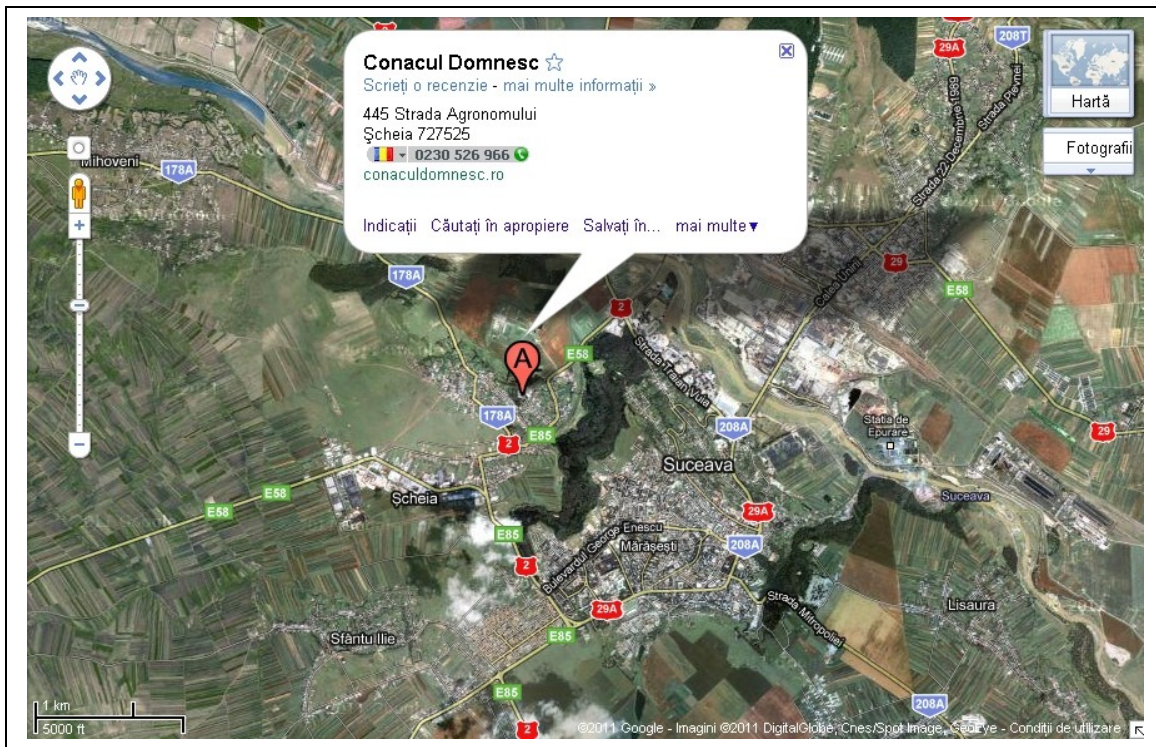
Campus Directions



Campus Map



Festive Dinner Location (“Conacul Domnesc” Restaurant)



13. Contact addresses and telephones:
 Geography Department, University of Suceava

13 Universității St., Suceava, Romania, 720229.
Phone: +40 230 216147
Mobile Phone: +40742051475
Fax: +40 230 523742

Marcel Mîndrescu: bcpaleoscience@gmail.com, 0040(0)742051475
Daniel Vereș: danveres@hasdeu.ubbcluj.ro, 0040(0)758967376
Andrei Briciu: andreibriciu@atlas.usv.ro, 0040(0)746422448
Ionela Grădinaru: ionela.gradinaru@gmail.com, 0040(0)740769404

14. Workshop Organizing Committee:

Chairman:

Dr. Marcel Mîndrescu, Department of Geography, University of Suceava, Romania

Deputy Chairmen:

Dr. Daniel Vereș, “Emil Racoviță” Institute of Speleology-Romanian Academy/Babeș-Bolyai University, Cluj, Romania
Prof. PhD Bogdan P. Onac, “Emil Racoviță” Institute of Speleology-Romanian Academy/Babeș-Bolyai University of Cluj Napoca, Romania and Dept. of Geology, University of South Florida, Tampa, USA

Scientific Secretaries:

Andrei Emil Briciu
Ionela Grădinaru

15. Organizational/Scientific Committee Members:

Prof. PhD Maria Rădoane (Scientific Secretary of Faculty of History and Geography, University of Suceava, Romania)
Prof. PhD Bogdan P. Onac (“Emil Racoviță” Institute of Speleology-Romanian Academy/Babeș-Bolyai University of Cluj Napoca, Romania and Dept. of Geology, University of South Florida, Tampa, USA)
Dr. Liviu Giosan (Woods Hole Oceanographic Inst., USA)
Dr. Astrid Björnsen Gurung (Mountain Research Initiative Europe (MRI), Programme Manager, Innsbruck, Austria)
Dr. Simon Hutchinson (University of Salford, School of Environment & Life Sciences, UK)
Dr. Daniel Vereș, “Emil Racoviță” Institute of Speleology-Romanian Academy/Babeș-Bolyai University, Cluj, Romania

Dr. Anton Brancelj (National Institute of Biology, Head of Department for Freshwater and Terrestrial Ecosystems Research; Ljubljana, Slovenia)

Dr. Sorina Farcaș (Head of Institute of Biological Research in Cluj-Napoca, Romania)

Prof. PhD Gheorghe Romanescu (Geography Department, University of Iași, Romania)

Prof. PhD Petru Urdea (Head of Geography Department, West University of Timișoara, Romania)

Dr. Zoltan Kern (Institute for Geochemical Research, Hungarian Academy of Sciences, Budapest, Hungary)

Dr. Ionel Popa (Head of the Experimental Station for Spruce Silviculture, Câmpulung Moldovenesc, Romania)

Dr. Ioan Tanțău (Geology Department, University Babes-Bolyai of Cluj Napoca, Romania)

Dr. Angelica Feurdean (Senckenberg Research Institute and Natural History Museum & LOEWE Biodiversity and Climate Research Centre (BiK-F), Frankfurt am Main, Germany)

Dr. Cristian Panaiotu (Atmospheric and Earth Physics, Astrophysics Department, University of Bucharest, Romania)

Dr. Ionuț Alexandru Cristea, Department of Geography, University of Suceava, Romania

Dr. Dumitru Mihailă (Geography Department, University of Suceava, Romania)

Dr. Vasile Budui (Geography Department, University of Suceava, Romania)

Pages Workshop Website:

<http://www.pages-igbp.org/calendar/upcoming/1-pages-sponsored/18-balkan-carpethian>

Workshop Website:

<http://atlas.usv.ro/www/climatechange/>

University of Suceava

